

# Forensic Full Spectrum Light Source Equipment (Laser & UV-VIS-IR)

--- OR-GQG1800

Forensic Full Spectrum Light Source Equipment is designed for the most versatile use in the field or lab environment for illumination and detection of evidence.

Laser light sources can be used to reveal this evidence by either fluorescence or enhanced contrast. Fluorescence occurs when a material absorb light of one color and then re-emits it virtually simultaneously as a different color. A material can be illuminated in the blue or green then viewed with filter goggles that only pass orange or red.

UV-VIS-IR light sources have been used for detection of biological evidences, which can be detected due to their nature characteristic, such as light asorption (blood) or flurescence effect (semen, saliva, urine, vaginal fluids, sweat etc.). And ALS are invaluable for detecting substances at a crime scene/lab such as bruising, hair, fibre, foot prints, fingerprints, stamps, Ninhydrine treated fingerprints, Super glue treated fingerprints, basic yellow 40, stamps, Cyanacrylate and general searching.

## WAVELENGTHS:

### A. Laser Light Source:

- i. green: 532nm±2nm
- ii. blue: 445nm ±2nm
- iii. purple: 405nm±2nm
- iv. CSS0: 445nm ±2nm & 532nm±2nm
- v. CSS1: 405nm±2nm & 445nm ±2nm
- vi. CSS2: 405nm±2nm & 442nm ±2nm & 532nm±2nm

### B. Visible Light Source:

- i. White 6500K (10W)
- ii. White 4500K (3W)
- iii. Red 635-640nm
- iv. Orange 605-610nm
- v. Green 520-525nm
- vi. Blue 475-480nm

### C. UV Light:

- i. 415-420nm
- ii. 375-380nm
- iii. 365-370nm

### D. Infrared light:

- i. 735-740nm
- ii. 855-860nm
- iii. 940-945nm



## SPECIFICATION:

1. Max. output power:  $\geq 12W$
2. Max. power of main engine:  $\geq 360W$ , Continuous and adjustable output light
3. Power supply: 220VAC or 24VDC battery pack
4. Battery: External lithium iron phosphate battery pack; Capacity: 12Ah, charging voltage: 29.2V
5. Laser output mode: 400 $\mu m$  multimode fiber, the fiber length:  $\geq 2.5m$
6. Laser light beam size: DIA.:  $\geq 11cm$  at 0.5m, DIA.:  $\geq 25cm$  at 1m
7. LED visible light beam size: DIA.:  $\geq 29cm$  at 0.5m, DIA.:  $\geq 60cm$  at 1m.
8. Light beam features: uniform light output with spot evenness  $\geq 85\%$ .
9. Structural feature: All-in-one machine, the shell is moisture proof and shockproof, and the single machine outputs 19 wave bands.

## PRODUCT DISPLAY

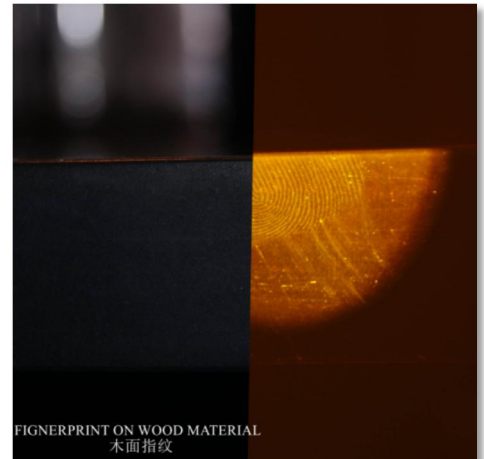
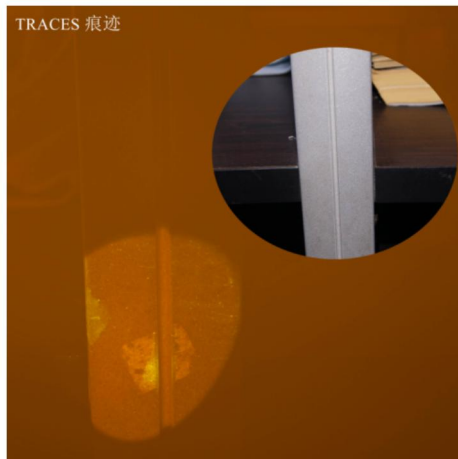
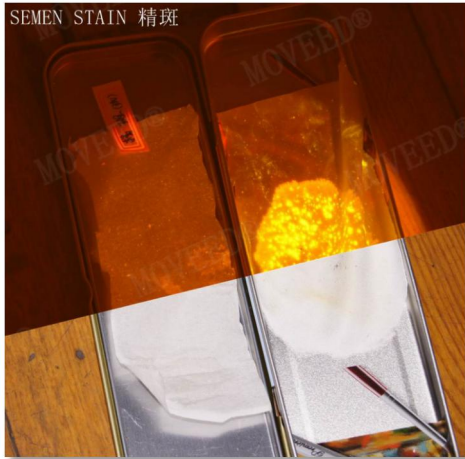




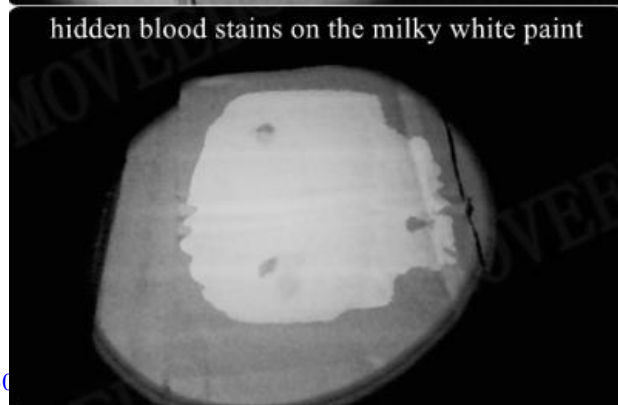
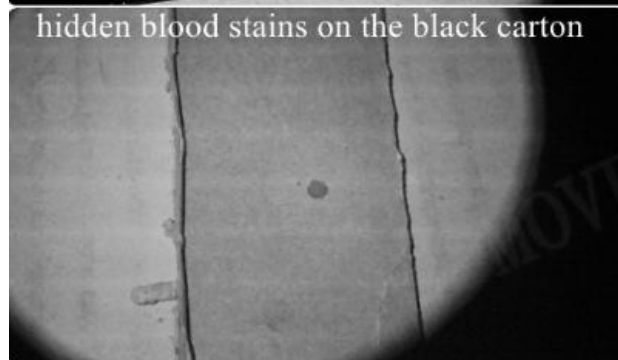
www.lightmobile.com

Hangzhou Hengli Electronic Technology Co., Ltd.  
No. 4 building, Dinglan Rd 118th, Jianggan District,  
Hangzhou City, Zhejiang Province,China  
Tel: 86-57186987719 Fax: 86-57186431401  
Email: hzhl@lightmobile.com

### LASER LIGHTS EFFECT:



### IR LIGHTS EFFECT:







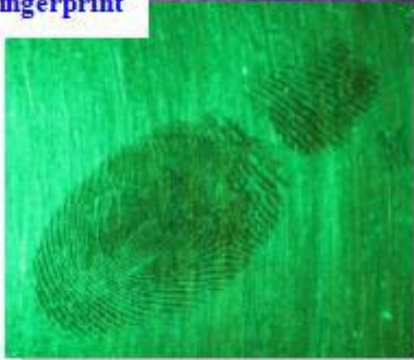
[www.lightmobile.com](http://www.lightmobile.com)

Hangzhou Hengli Electronic Technology Co., Ltd.  
No. 4 building, Dinglan Rd 118th, Jianggan District,  
Hangzhou City, Zhejiang Province, China  
Tel: 86-57186987719 Fax: 86-57186431401  
Email: hzhl@lightmobile.com

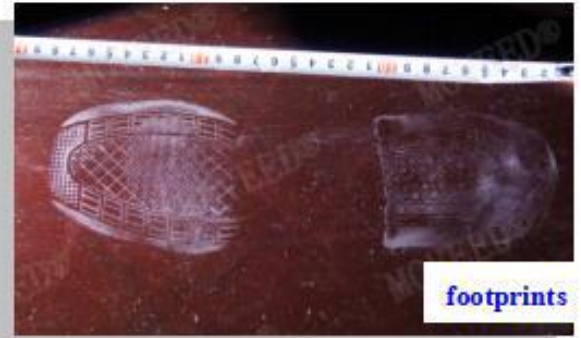
### ALS EFFECTS:



fingerprint



Biological evidence



footprints



traces