

Crime Scene Wide Footprint Detection Light

-- OR-GZJ60

Crime scene footwear impressions are most valuable as forensic evidence, in crime of burglary, assault, robberies, rape, homicide and other crimes, where proof of an individual's presence is incriminating. They provide valuable information to the scene of crime officer and investigators, including information concerning the number of suspects, their path through the scene, their involvement in the crime, and their shoe type and size estimates. Impressions can reveal the point of entry and exit, often leading to other evidence.

Footwear Impression Detection Light(OR-GZJ60) providing low angel lighting and illuminating with oblique lighting, enable the footwear impression, fibres and other traces of evidence visible.

SPECIFICATION:



- Power: $\geq 60W$
- Voltage: 12.6V
- Battery type: Polymer lithium-ion battery, 9Ah
- Charging current: 4A
- Charging time: 3 hrs
- Working current and voltage: 5.6A@12V
- Working temperature: normal temperature
- Light spot uniformity: 80%
- Rated working time: $\geq 1h$
- Light beam size at 0.5 m: length 65cm, height 8cm, illumination: $\geq 70000Lux$
- Light beam size at 1 m: length 110cm, height 15cm, illumination: $\geq 18000Lux$
- Projection angle: 10 degrees
- Shell: aluminum alloy
- Heat dissipation: air cooling, housing temperature rising $\leq 15^{\circ}C$
- External dimension: 245*240*50mm
- Net weight: $\geq 3.2kg$
- OR-GZJ60A: no filters, non-dimmable
- OR-GZJ60B: equip with filters(red, green, blue), adjustable light



PRODUCT DISPLAY:

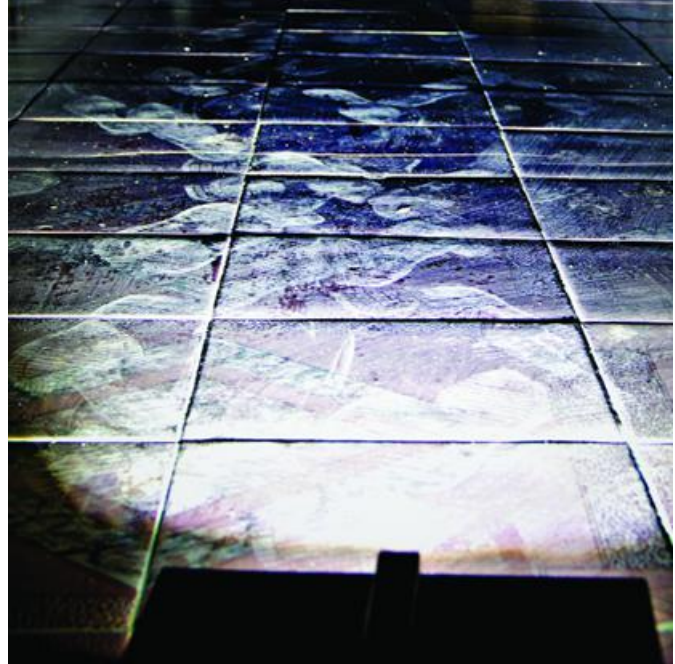
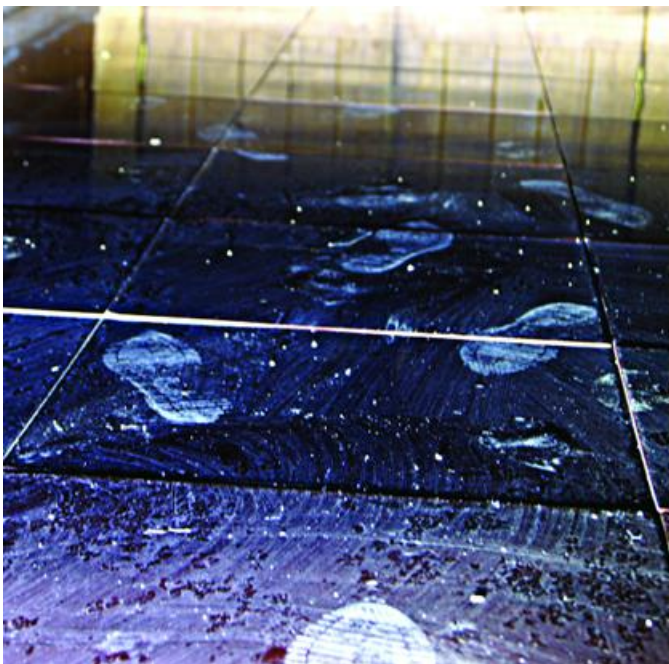




www.lightmobile.com

Hangzhou Hengli Electronic Technology Co., Ltd.
No. 4 building, Dinglan Rd 118th, Jianggan District,
Hangzhou City, Zhejiang Province,China
Tel: 86-57186987719 Fax: 86-57186431401
Email: hzhl@lightmobile.com

EFFECT PROD. :



United Social Credit Code(Business Licence): 91330104736016531K
ISO 9001 Certified