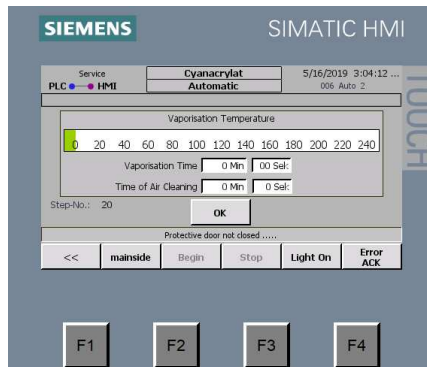


Cyanoacrylate Fuming Chamber VCK 30L, in a trolley



The Cyanoacrylate fuming chamber, now available with **touch panel**, is a good method to secure evidence for all items with non-absorbent surface.

This method presents a considerable advantage compared to the **securing of evidence** with adhesions promoters, especially with older traces and/or sticky surfaces.

With the new touch panel and its simple operation, the evaporation process can now run as an automatic mode or continue to be operated manually. The integrated **LED illumination** can be switched off at anytime.

The use of **fluorescent cyanoacrylate** (powder or liquid) is also in this unit possible. The variable connection, 230V or 12V, makes this fuming chamber **ready to use even in a car**. All hazardous fumes are filtered through a activated carbon mat which is very easy to change.

As the user protection is very important, **the door is electronically locked during the whole fuming process** and can be opened right after the air-cleaning process ended.

Information about the fuming process:

The process of Cyanoacrylate fuming is a very efficient method to secure latent finger-prints on smooth, non-porous surfaces.

This method presents a considerable advantage compared to the securing of evidence with adhesions promoters, especially with older traces, and sticky or porous surfaces.

Cyanoacrylate (ethyl ester) is a viscid special adhesive that can be assigned to instant adhesives (super glue). Due to its ability of polymerisation, Cyanoacrylate is an extraordinary compact and fast hardening special adhesive. Fluid Cyanoacrylate generates vapours that react sensitively to certain constituents of latent finger-prints (sebum). This procedure is effective on nearly every surface.

Technical data from the Cyanoacrylate fuming chamber

External dimensions:	
Width mm	510
Height mm	610
Depth mm	385

Internal dimensions:	
Width mm	370
Height mm	320
Depth mm	260

Weigth	approx. 26 kg
Connected Load	230 V / 12 V, 456 W, 50 Hz
Exhaust fan	24 V / 2,1 W
- Volume flow	48 m ³ / h
Air circulation fan	24 V, 3,6 W
Lighting 12 LED´s	24 V, 1 W
Vaporization heating plate	24 V, 90 W
Humidity generation	230 V, 90 W

material

- polypropylene cabinet
- front door
- hanging rods, made of stainless steel

*Various sizes available on request.

Made in Germany

Article number. 50709