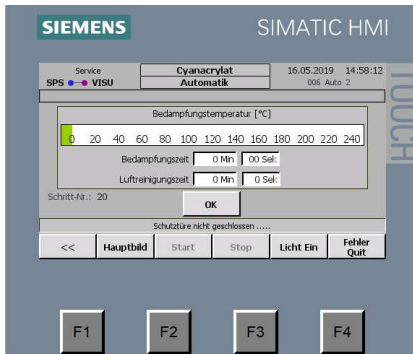


## Cyanoacrylate Fuming Chamber VCA 30L with Touch-Panel



The Cyanoacrylate fuming chamber, now available with **touch panel**, is a good method to secure evidence for all items with non-surface.

In order to keep **cleaning** easy, all surfaces and corners in the interior were kept as level as possible. Therefore this unit is especially suitable for **DNA-relevant** trace evidence.

With the new touch panel and its simple operation, the evaporation process can now run as an automatic mode or continue to be operated manually. The integrated **LED illumination** can be switched off at anytime.

The use of **fluorescent cyanoacrylate** (powder or liquid) is also possible in this unit (optionally Art. 50637). All hazardous fumes are filtered through an activated carbon mat which is very **easy to change**.

As the user protection is very important, **the door is electronically locked during the whole fuming process** and can be opened right after the air-cleaning process ended.

## Information about the fuming process:

The process of cyanoacrylate fuming is a very efficient method to secure latent fingerprints on smooth, non-porous surfaces.

This method presents a considerable advantage compared to the securing of evidence with adhesions promoters, especially with older traces, and sticky or porous surfaces.

Cyanoacrylate (ethyl ester) is a viscid special adhesive that can be assigned to instant adhesives (super glue). Due to its ability of polymerisation, Cyanoacrylate is an extraordinary compact and fast hardening special adhesive. Fluid Cyanoacrylate generates vapours that react sensitively to certain constituents of latent fingerprints (sebum). This procedure is effective on every surface.

## Technical data of the Cyanoacrylate fuming chamber

<b>External dimensions:</b>	
Width	465mm
Height	580mm
Depth	300mm
<b>Internal dimensions:</b>	
Width	359mm
Height	309mm
Depth	249mm
Chamber-Volume	30L
Weight	25kg
Fan air purification	24V / 2,3W
- Volume flow	48 m <sup>3</sup> / h
Fan air circulating	24 V, 3,6 W
- Volume flow	56m <sup>3</sup> /h
Lighting 12 LED´s	24 V, 1 W
Evaporisation heating plate	24 V, 90 W
Humidity generation	24 V, 90 W
Connected load:	230 V/50 Hz
<b>Material</b>	
- Polypropylene cabinet	
- Front door made of security glass	
- Hanging rods made of stainless steel	

\*Various sizes available on request

Made in Germany

**Article number. 54509**