

Professional Fire Investigation



Virtual Reality Training

RiVR
investigat^o

Consistent and cost effective fire investigation training

Fire investigators all over the world are trained in a similar way to understand fire behavior, smoke patterns and causation.

Metal containers are 'dressed' to replicate a real life setting, a source of ignition established and then a fire started. Once the fire has been put out then a course of students have the opportunity to investigate the scene.

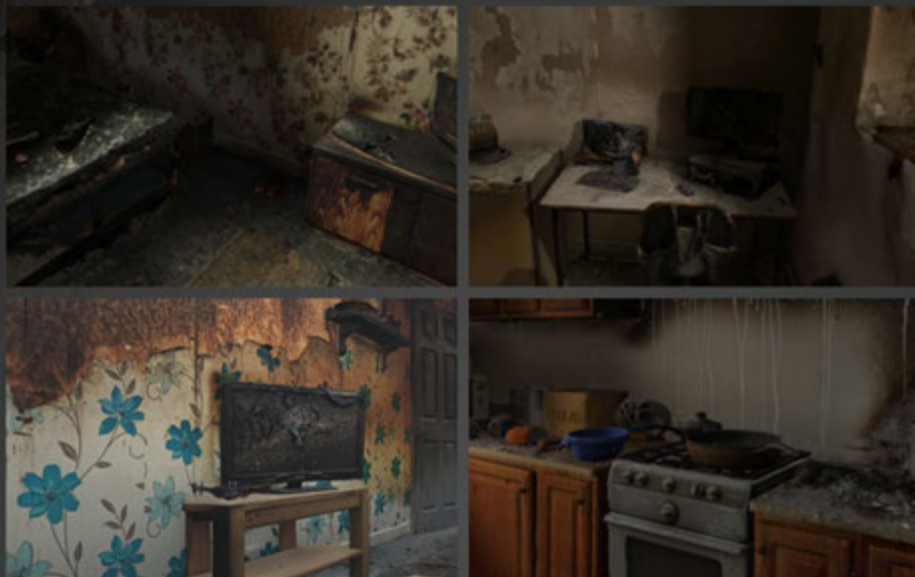
This process is costly, time consuming and not environmentally friendly - not to mention the health implications which are only recently being published by academia.

RiVR Investigate provides a virtual photorealistic room scale solution that addresses all training needs and is also repeatable, recordable, consistent and a cost effective way of learning.



"The VR programme will help us to train more colleagues more quickly. It will also be more cost-effective than our current process, which involves setting up one-burn-only fire scenes."

West Midlands Fire Service



RiVR Investigate Solution

Investigate each scene using the array of tools. Lay down evidence markers, record audio notes, take photographs and light the scene using a torch or site lamps. All scene items can be examined or sent as evidence to the lab for closer inspection.

As a trainer you are able to add a predetermined set of tasks for the student and can oversee every session using the Virtual Reality Monitor (VRM). Switch between different camera modes, control recordings and make contemporaneous notes. Logging individual students for subsequent review.

To ensure training accuracy, RiVR Investigate scenes are based on real world fires and designed in accordance with current training standards and in conjunction with a certified International Association of Arson Investigators (IAAI) fellow.



Investigate Tool Kit

Multitude of tools that can all be used in VR that include a camera, evidence markers, torch and gas detectors.



VRM

Full session monitoring, recording and playback using the Virtual reality monitor.



Multiplayer

Multi user sessions where you can communicate and interact with multiple users in different geographical locations.



VR Scene Descriptions

360 videos of pre- and post incident, in which an experienced investigator points out forensic evidence.



Sniffer Dog

Call in your VR sniffer dog on each scene if required to determine the use of accelerants.



Scene Library

Multiple scenarios scanned from real world burns and designed in accordance with current training standards and The International Association of Arson Investigators.

#YouThinkYouKnowVR

Get in touch

tel: +44 (0)1926 800740

email: info@rivr.uk

web: rivr.uk

RiVR
investigate